



# SUMMARY ANNUAL REPORT

For the Fiscal Year Ending December 31, 2017

CERF



COUNTY EMPLOYEES'  
RETIREMENT FUND

*Helping you build a brighter tomorrow.*

# COUNTY EMPLOYEES' RETIREMENT FUND

## CERF Pension Plan Information

CERF Administrative Office  
2121 Schotthill Woods Drive  
Jefferson City, MO 65101



Telephone: (573) 632-9203  
Toll-Free: (877) 632-2373  
Facsimile: (573) 761-4404  
Website: [www.mocerf.org](http://www.mocerf.org)  
E-mail: [admin@mocerf.org](mailto:admin@mocerf.org)



## COUNTY EMPLOYEES' RETIREMENT FUND 2017 Board of Trustees

**Tom Ruhl** – *Chair*

**Mark Price** – *Vice Chair*

**Conny Dover** – *Secretary*

**Jim Atchison** – *Board Member*

**Gary Emerson** – *Board Member*

**Collin Follis** – *Board Member*

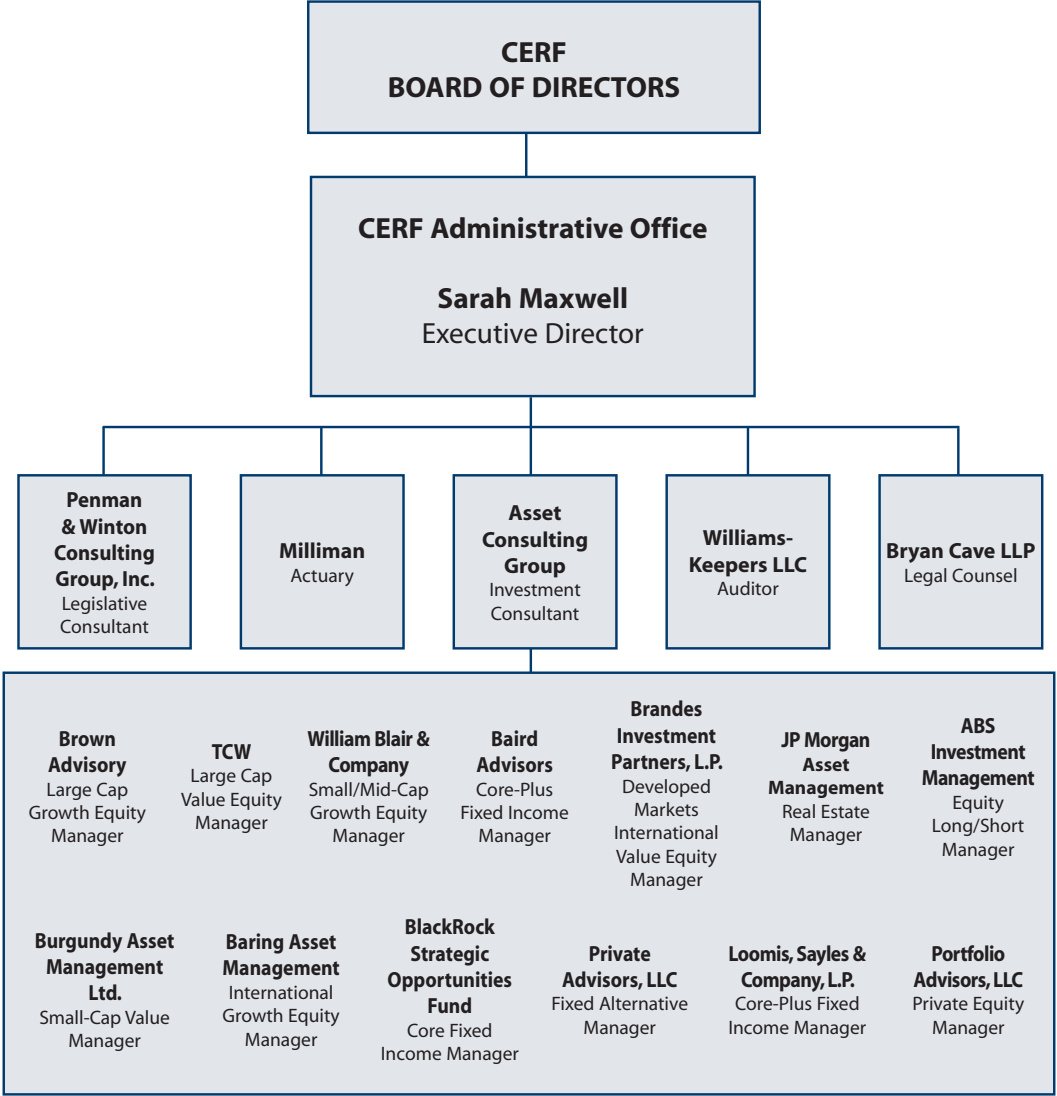
**Jim Platt** – *Board Member*

**June Pitchford** – *Board Member*

**Wayne Scharnhorst** – *Board Member*

**Sherry Shamel** – *Board Member*

# ADMINISTRATIVE STRUCTURE



*This Annual Report is distributed for informational purposes only. The full text of actuarial reports, financial statements and audit materials is available upon request pursuant to Missouri's Open Records Law. To obtain any of these documents, you may send a written request to the plan administrator at:*

*CERF Plan Administrator  
2121 Schotthill Woods Drive  
Jefferson City, MO 65101*

*The actual language of the statutes and rules and regulations creating and implementing the County Employees' Retirement Fund controls and takes precedence over the material contained herein. In the event a member has any questions concerning the County Employees' Retirement Fund, the member should look to the statutes codified at Section 50.1000, RSMo (1994) et. seq. for guidance. Members should not rely on this summary in place of the actual text of the law.*

# CERF Pension Plan

<b>Eligibility</b>	Full-time employees (scheduled to work at least 1,000 hours a year) are eligible to participate in the Pension Plan. Part-time and seasonal employees become eligible on January 1 or July 1 after completion of 1,000 hours of service in a calendar year, or upon transfer to full-time status.
<b>Participation</b>	Participation is mandatory for eligible employees. Full-time employees begin participating in the plan immediately upon their date of hire. Part-time and seasonal employees begin participating once they become eligible.
<b>Contributions</b>	House Bill 1455 requires all participants hired on or after February 25, 2002, to contribute an additional 4% of gross salary to the plan, effective January 1, 2003. A non-LAGERS participant hired prior to February 25, 2002, contributes 2%; a non-LAGERS participant hired on or after February 25, 2002, contributes 6% to the plan. A LAGERS participant hired prior to February 25, 2002, is not required to make contributions; a LAGERS participant hired on or after February 25, 2002, contributes 4% to the plan. Nearly all of the funding for CERF comes from county receipts in the form of contributions, fees and penalties.
<b>Vesting</b>	A participant is vested after eight years of continuous creditable service during which pay is earned and received for at least 1,000 hours in each of those eight years.
<b>Prior Service</b>	Employees who were employed on June 10, 1999, and remained employed through January 1, 2000, do not have to purchase prior service. (Specific rules apply in certain rehire circumstances.) Members who terminated vested or retired prior to January 1, 2000, must purchase any service accrued prior to August 28, 1994, in order to include that service in their retirement benefit.
<b>Early Retirement</b>	Members have the option of retiring as early as age 55 (with eight years of continuous creditable service) and receiving an actuarially-reduced benefit. To be eligible for early retirement, a participant must terminate employment on or after January 1, 2000, and meet other eligibility requirements.
<b>Cost-of-Living Adjustment</b>	The Board may authorize a Cost-of-Living Adjustment (COLA) each year equal to 100% of the Consumer Price Index, up to 1%, for all members who have been receiving benefits for at least one year on the date the COLA becomes effective. COLAs will become effective on July 1 of each year.
<b>Survivor Benefits</b>	<p>ACTIVE EMPLOYEES: If a participant dies while actively employed, his or her named beneficiary will receive a lump-sum death benefit of \$10,000.</p> <p>NON-VESTED MEMBERS: Senate Bill 625, effective August 28, 2012, allows a refund of contributions to the beneficiary(ies) of active members who die after December 31, 2002, and before becoming vested.</p> <p>MARRIED, VESTED MEMBERS: If a vested participant dies before his or her pension begins, his or her surviving spouse can apply for a 50% spousal pension benefit.</p> <p>SINGLE, VESTED MEMBERS: House Bill 795, effective August 28 2004, allows a refund of contributions to the beneficiary(ies) of a single, vested member who dies on or after August 28, 2004.</p> <p>RETIRED MEMBERS: Depending on which option the member chooses, the designated survivor will receive the appropriate amount of benefits under the survivor option selected on his or her benefit calculation. Members who terminated employment or retired on or after January 1, 2000, have the option to designate someone other than a spouse as the beneficiary of their retirement annuity.</p>

# CERF Savings Plan

<b>Eligibility</b>	A member must participate in the CERF Pension Plan in order to be eligible to participate in the CERF Savings Plan.
<b>Automatic Contributions</b>	Effective January 1, 2000, a member who is not in LAGERS is required to contribute .7% to the CERF Savings Plan. This pre-tax deduction is deposited automatically in the member's 401(a) account.
<b>Voluntary Contributions</b>	In 2017, participants may contribute up to the lesser of \$18,000, or 100% of their includible compensation to the 457 component of the plan. This limit includes contributions to other 457 plans as well.
<b>Matching Contributions</b>	Each year, the Board of Directors will determine the amount available for a matching contribution to the Savings Plan (up to plan limits). This matching amount will be added to member accounts for those who contributed to the 457 Plan, earn and receive pay for at least 1,000 hours during the year, retire at age 62, or die while employed by the county. The match will be deposited into the 401(a) component of member accounts as soon as administratively feasible after the plan year has ended.
<b>Vesting</b>	Members are always 100% vested in their automatic (.7%) and voluntary (457 plan) contributions, and are 100% vested in the matching contributions when they have 5 years of creditable service (from date of hire), or if they die during the plan year.
<b>Investment Options</b>	A broad range of investment options is available, including the option to pick individual funds or target date funds, or have your account managed for you.
<b>Making Changes</b>	Participants may change the amount of their contributions on a quarterly basis and can stop 457 plan deferrals completely at any time. Changes to investment options can be done at any time. Investment changes can be made on a same-day basis through either KeyTalk at 800-701-8255 or the website at <a href="http://www.empower-retirement.com">www.empower-retirement.com</a> . You will need to use your user ID and personal identification number (PIN) provided to you by Empower Retirement.
<b>Payment Options</b>	Payments from the 457 or 401(a) portion of the plan may be made through annuity payments, lump sum, or periodic distributions if the account balance is \$5,000 or more.
<b>Rollovers and Plan Transfers</b>	Members who have other qualified 457, 401(a) or 401(k) plans may transfer or roll over money from those plans to the appropriate component of the CERF Savings Plan. Likewise, if a member leaves employment, he or she may transfer or roll over his or her CERF Savings Plan balance to another qualified plan or IRA.
<b>Need More Information</b>	For more information on the CERF Savings Plan, please call the CERF Administrative Office.



# Investments

## CERF Investment Portfolio Background and Objectives

The purpose of CERF's investment program is to provide long-term benefits to the plan's participants, by investing the pension fund assets in the best interest of the fund's participants.

CERF's Board of Directors maintains an Investment Policy which articulates the fund's goals, objectives, and risk parameters. It states that the pension fund portfolio should be diversified among various investments, and should aim to achieve attractive investment returns within prudent risk parameters over a long-term time horizon.

## Total Portfolio Asset Allocation

Asset allocation is employed as the primary tool for managing the long-term risk and return objectives for CERF's investment portfolio. CERF's portfolio is well-diversified, with exposure to several different investment strategies (asset classes).

CERF's portfolio is continually monitored by the investment consultant and Board of Directors for appropriateness, given the stated investment objectives and guidelines. Assets are periodically rebalanced to keep the exposures to various investments within the stated ranges defined in the investment policy. New assets classes are periodically added to the mix to enhance diversification.

The portfolio's current target asset allocation mix is 65% equity (stocks), 30% fixed income (bonds) and 5% real assets (real estate). Diversification goes beyond these broad asset classes, however, as the portfolio is invested in several sub-asset classes and investment managers, each with their own set of diversification attributes.

## Equity Portfolio Design

CERF is invested in equities for the growth opportunities they provide. CERF owns different types of equities (domestic stocks, international stocks, hedged equity funds, and private equity), in different sizes (small, mid, and large capitalization stocks), in different styles (value and growth stocks) and with different investment management organizations.

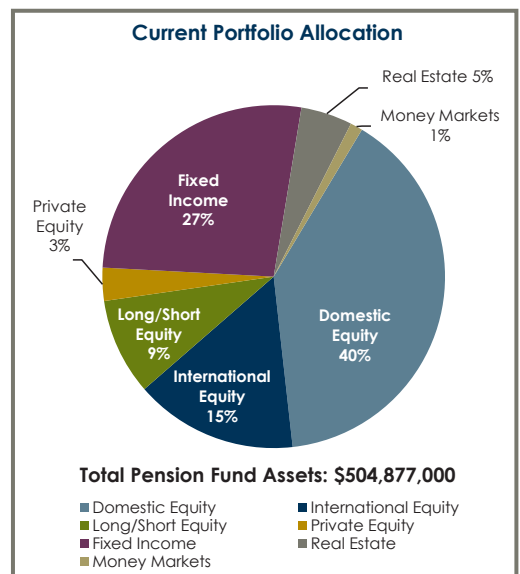
## Fixed Income Portfolio Design

CERF invests in fixed income to enhance diversification, as over time, bonds are generally less volatile than stocks. Much like the equity allocations, the complementary fixed income strategies are designed to provide broad exposure to the global fixed income markets, including diversification by quality, sector, geography, and security type.

## Real Asset Portfolio Design

Real assets typically behave differently than stocks and bonds, and their low correlation to these other asset classes provides even further diversification to the investment portfolio. CERF's portfolio includes an allocation to real estate through a diversified real estate fund. The real estate portfolio is invested in different geographic locations and different property types, while maintaining strict quality requirements for each property, including leverage and occupancy rates.

The chart below depicts the pension fund's total assets and asset allocation posture as of December 31, 2017:



## 2017 Year in Review

Financial market performance in 2017 was characterized by exceptionally low volatility, resilience to unexpected events and gradual central bank tightening, leading to the eighth year of positive global economic growth. Emerging market stocks led the way, with US and developed international equities also recording impressive results. While the Federal Reserve was most active, evolving perceptions regarding global monetary policy lead to broad US dollar weakness. US bond prices climbed despite rising short-term rates, as the curve continued its flattening trend, indicating pessimism about longer-term growth.

Both stocks and bonds advanced in 2017, driven by relatively low interest rates and continued strength in US corporate profits. The S&P 500 index had positive returns in every month, extending its streak to 14 months, ending the year up 22%. The Russell 2000 index of small cap stocks was up nearly 15%. Companies both large and small seemed to benefit from the expectation and subsequent passage of tax reform.

# Investments

Global markets outperformed US equities, with the more developed markets (MSCI EAFE) up nearly 26% and the emerging markets (MSCI EM) up almost 38%. Both were assisted by the notable decline in the US dollar (USD). China's economy continued on its recent growth trajectory, and the country's stock markets soared despite investor concern over building financial leverage.

Bonds generated modest gains due to positive performance in all risk sectors in the midst of fluctuating US Treasury yields.

## Total Portfolio Performance

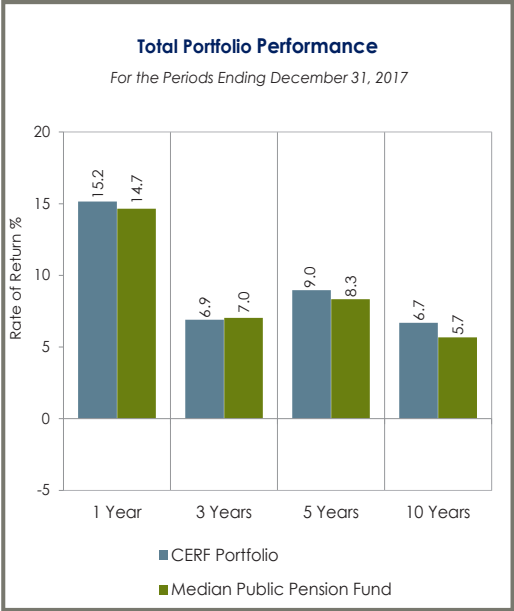
The success of the investment program is defined by its adherence to the investment policy guidelines, and its performance compared to the stated return objectives and risk parameters. The chart below shows the pension fund's annualized performance and risk since its inception compared to the stated objectives:

### Total Pension Fund Performance vs. Objectives

(December 31, 1994 – December 31, 2017)

	Benchmark	CERF
Return Objectives		
At a minimum, it is the objective of CERF to exceed its actuarial interest rate assumption on an ongoing basis.	7.5%	8.9%
The pension fund's annualized total return should equal or exceed the annualized rate of inflation as indicated by the Consumer Price Index by 5%.	7.3%	8.9%
The pension fund's total return should exceed the total return of an index composed as follows: 65% MSCI ACWI Index 30% BloomBar US Aggregate Bond Index 5% NFI ODCE Index	8.9%	8.9%
Risk Objective		
The pension fund's level of risk, as measured by Standard Deviation, should be consistent with the risk of the index noted above.	9.5%	9.4%

The chart below compares CERF's investment performance over the one, three, five, and ten year periods ending December 31, 2017. For most periods, including 2017, CERF's portfolio outperformed the median public pension fund.



## Ongoing Monitoring

The CERF Board of Directors works closely with their investment consultant to oversee all aspects of the investment program, including investment policy design and review, asset allocation, and ongoing investment manager due diligence.

CERF's investment managers provide regular updates on their portfolios to the consultant and CERF's staff. In addition, each investment manager presents a formal update to the Board on a periodic basis.

CERF's Board of Directors and their consultant meet each calendar quarter to review the investment portfolio in detail and to discuss and address specific issues. In addition, interim meetings are held as needed. This ensures that the monitoring and oversight process for CERF's investment portfolio is ongoing.

The CERF Board's primary focus regarding the retirement funds is to develop and implement an investment program which is designed to achieve the stated investment objectives in a prudent manner over a long-term time horizon.

# Actuarial

## PLAN MEMBERSHIP

AS OF JANUARY 1, 2018

Covered Payroll	\$414,454,785
Average Pay per Active Member	\$36,040

## ACTUARIALLY DETERMINED CONTRIBUTION (ADC)

Unfunded Actuarial Accrued Liability (UAAL)	\$199,671,571
Amortization of UAAL, with interest to mid-year*	\$ 19,488,197
Normal Cost, with interest to mid-year	\$ 23,547,569
Reduction in Normal Cost for Member Contributions	\$ 14,768,333
Annual Required Contributions as a percent of payroll	\$ 28,267,433 6.82%

## PLAN ASSETS

Actuarial Value	\$507,132,934
Market Value	\$509,530,207

## FUNDED STATUS

Entry Age Normal Actuarial Accrued Liability	\$706,804,505
Funded Ratios	
Funded Percentage on Actuarial Value of Assets	72%
Funded Percentage on Market Value of Assets	72%

\* Until July 1, 2011, the UAAL was being amortized as a level percentage of payroll over a 30-year period beginning January 1, 1995. As of July 1, 2011, the UAAL amortization was started fresh over a 20-year period. New components of the UAAL will be amortized over new 20-year periods as such components arise.



# Financial Statements

## STATEMENT OF FIDUCIARY NET POSITION DECEMBER 31, 2017

### ASSETS

Cash	\$ 3,168,815
Receivables:	
Member contributions	351,810
Member prior service contributions	115,222
County contributions	2,966,543
Receivable for pending investment sales	319,959
Accrued interest and dividends	176,545
Total receivables	<u>3,930,079</u>
Investments, at fair value:	
Common stocks	192,988,806
Fixed income mutual funds	127,562,319
Hedge funds	53,531,591
International equities funds	77,644,969
Real estate fund	20,895,175
Private equity	16,457,383
Cash equivalents	12,667,572
Total investments	<u>501,747,815</u>
Invested securities lending collateral	50,171,889
Other assets	13,352
Capital assets, net of accumulated depreciation of \$2,900,154	<u>5,695,324</u>
Total assets	<u>564,727,274</u>

### LIABILITIES

Accounts payable	726,789
Accrued defined contribution plan funding	3,200,949
Other accrued expenses	166,251
Unearned revenue	58,428
Payable for pending investment purchases	242,552
Collateral for securities on loan	<u>50,802,098</u>
Total liabilities	<u>55,197,067</u>
Net position – restricted for pension benefits	<u>\$ 509,530,207</u>

The notes to financial statements are an integral part of these statements and are available on CERF's website, or by contacting the CERF Administrative Office.

# Financial Statements

## STATEMENT OF CHANGES IN FIDUCIARY NET POSITION FOR THE YEAR ENDED DECEMBER 31, 2017

### ADDITIONS:

#### Contributions:

County receipts	\$ 21,006,080
By members	12,366,187
For members, paid by counties	1,977,497
Members, purchase of prior service	<u>72,243</u>
Total contributions	<u>35,422,007</u>

#### Investment income:

##### Investing activities:

Net appreciation in fair value of investments	58,701,610
Fixed income securities	3,440,365
Equity securities	4,857,237
Alternative investments	2,609
Other miscellaneous income	<u>73,912</u>
Total investment income	67,075,733
Investment expenses	<u>(2,650,758)</u>

Net income from investing activities	<u>64,424,975</u>
--------------------------------------	-------------------

#### Securities lending activities:

Income	775,311
Expenses, net	(624,344)
Net increase in fair value of re-invested collateral	<u>14,556</u>

Net income from securities lending activities	<u>165,523</u>
---	----------------

Total net investment income	<u>64,590,498</u>
-----------------------------	-------------------

Other income	<u>6,441</u>
--------------	--------------

Total additions	<u>100,018,946</u>
-----------------	--------------------

### DEDUCTIONS:

Benefits	31,129,540
Refunds of member contributions	3,678,904
Defined contribution plan matching contribution	3,200,949
Administrative expense	<u>3,249,395</u>

Total deductions	<u>41,258,788</u>
------------------	-------------------

Net increase	58,760,158
--------------	------------

#### Net position – restricted for pension benefits

Beginning of year	<u>450,770,049</u>
-------------------	--------------------

End of year	<u><u>\$ 509,530,207</u></u>
-------------	------------------------------

The notes to financial statements are an integral part of these statements and are available on CERF's website, or by contacting the CERF Administrative Office.

# CERF Demographics

(Data as of December 31, 2017)

Active Participants	11,500
Retired Members and Beneficiaries	2,324
Terminated Vested Participants	5,086

Sum of Death Benefits (since inception)	\$ 5,790,000
Sum of Remaining Buy Back Balances	\$ 115,222
Sum of Benefit Payments, Taxes and Buy Back Payments (since inception)	\$286,173,695

Average Gross Monthly Benefit	\$ 522
-------------------------------	--------

## Summary of County Receipts for 2017

Assessor Late Fees	Collector Merchant License Fees	Collector Delinquent Fees	County Interest	Employee Contributions	County Contributions	Recorder Document Fees
\$6,851,017	\$1,057,071	\$8,141,782	\$65,979	\$12,366,187	\$1,977,497	\$4,890,231